

# Using Generative Artificial Intelligence (GenAI): A guide for students

## What is GenAI?

GenAI is a type of AI model that creates new data or information from a given input. GenAI models can be used for a variety of applications, such as image and text generation. Some ethical concerns regarding GenAI include the potential for the creation of fake or misleading content, infringement of intellectual property rights, and the misuse of generated content for malicious purposes such as cyberbullying or fraud. (Paraphrase from OpenAI's ChatGPT AI language model, personal communication, March 14, 2023).

## DO

- ✓ Confirm with your educators before using GenAI. Some may permit its use, while others may specify limitations or prohibit its use in certain assessment pieces.
- ✓ Make sure that your use of GenAI upholds the [Student Code of Conduct](#) and [Academic Integrity Policy](#).
- ✓ Be critical of the output, ensuring it's reputable, accurate and current.
- ✓ Take an ethical, thoughtful, and considered approach.
- ✓ Follow the GenAI citation and referencing guidelines provided by the [Library](#).
- ✓ Submit a [Statement of Authorship](#) with every assessable piece of work.
- ✓ You may choose to include with your assessment submission a [written statement](#) which details your use of GenAI.
- ✓ The advice regarding GenAI may change in the future, so refresh your knowledge on a regular basis.

Learn more about  
using GenAI at Bond



- ✓ If you are struggling with your studies, reach out:
  - Contact your educators, Student Affairs and Service Quality team members, or a range of wellbeing support services at [Bond Care](#).
  - The [Library](#) and [Academic Skills Centre](#) offer individual appointments, workshops, tutoring, and peer mentoring.

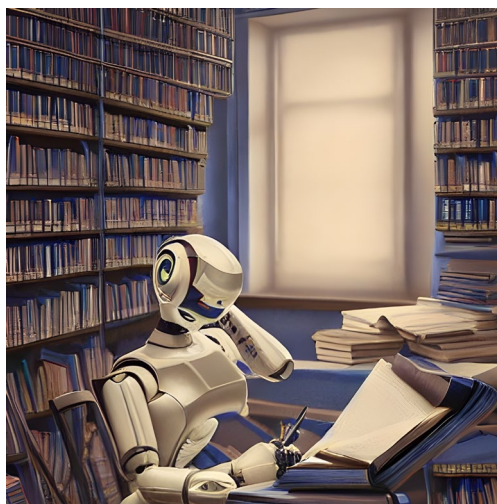


Image generated by DeepAI tool, March 14, 2023. Prompt: Robot studying in a library, main colour is blue.

## DON'T

- ✗ Do not simply copy and paste the GenAI output into your final submission and hope for the best! The consequence of this could be a charge of academic misconduct.

## Support

For more information, visit [Academic Integrity at Bond](#)

**Ask a Librarian**  
07 5595 1510  
[askalibrarian@bond.edu.au](mailto:askalibrarian@bond.edu.au)  
[Make an appointment](#)

**Academic Skills Centre**  
07 5595 4783  
[asc@bond.edu.au](mailto:asc@bond.edu.au)  
[Make an appointment](#)



**Academic Integrity**  
[ai@bond.edu.au](mailto:ai@bond.edu.au)

ABN 88 010 69 4121  
CRICOS Provider Code 00017B  
TEQSA Provider ID PRV12072