



# 2025

**Postgraduate  
Guide**

# With the right university, the sky is the limit

With programs, facilities, academics and support dedicated to your success, imagine where postgraduate qualifications from Bond University could take you.

Bond isn't like other universities. Underpinned by a highly personalised approach to postgraduate education, further study at Bond can open doors to new opportunities, a new career or new goal.

With the flexibility to tailor your degree and timetable, you will be mentored by world-class academics and have access to extensive industry connections.

If you're seeking a change of career, a fresh challenge or the next step, it all starts here, at Bond University.





Personal mentorship  
and support



Global industry connections



Accelerated programs



Lifelong career support



## Usman Khawaja

AUSTRALIAN CRICKETER.  
FOUNDER, USMAN KHAWAJA FOUNDATION.  
MBA STUDENT.

"When I did my undergraduate degree at another university when I was younger, I just felt like I was a little piece in a humongous cog. I was just getting a degree and going through the motions really. At Bond, I actually feel like an individual who is connected with the university and with the lecturers. It's really different.

"When I was considering where I wanted to do my MBA, Bond stood out straight away. I respect the way they do things - it's very different to the norm, to the big universities and I really love that.

"Studying an MBA at Bond is providing me with skills for life after cricket."



## **In a competitive workforce, it pays to stand out.**

**A university qualification is about so much more than the degree. It's how you learn, who you learn from, and who you learn with, that will prove invaluable to your future career opportunities and networks.**



### **Learn from the best in the business**

At Bond, you will learn under the mentorship and guidance of high-profile industry leaders and internationally recognised researchers. With them, they bring decades of wisdom and a wealth of industry contacts, which ensure you will be gaining highly relevant skills and experiences that you can apply to your career immediately.

### **Build a global network**

It isn't just your lecturers and tutors that will form part of your new network – future colleagues, clients and contacts are right by your side in class. Grow a lifelong professional network by studying alongside a diverse cohort of students from more than 90 countries, all of whom have a range of life and professional experiences to connect with and learn from.



### **Learn in world-class facilities**

Bond's facilities, technology and equipment are second to none. You will have access to tools used in industry, ensuring you develop skills and knowledge that will allow you to confidently move into a new career or step into a new role. Bond's footprint extends beyond its Gold Coast campus – we also have a location in Brisbane CBD, as well as at the newly expanded Bond Institute of Health and Sport.



### **Be supported every step of the way**

In addition to the support you will receive from your academics and peers, as a postgraduate student at Bond, you will have lifelong access to career development support through the Career Development Centre. Our team of experts are dedicated to ensuring your success, giving you access to a full suite of career services including interview preparation, career change advice, job searching and internship placements.



## A postgraduate qualification, tailored to you.

Every person's background, experience, and personal and professional goals are different, so it's important that your postgraduate study path is created especially for you. Bond's postgraduate programs are designed with flexibility at their core, ensuring you can curate your studies to meet your career goals and suit your personal circumstances.

### → Start in January, May or September

Bond delivers three semesters per year, giving you the flexibility to start your study at a time that suits you.

### → After-hours classes

Many of our programs offer after-hours classes, designed to fit around your professional and personal commitments.

### → Accelerated programs

Bond's accelerated timetable allows you to complete a master's degree in as little as 12 months full time. Even if you choose to study part time, the three-semester schedule allows you to accelerate your progress and complete your degree faster than at other universities.

### → Intensive subject delivery

Some subjects are also offered via an intensive mode of delivery, which means you can complete an entire subject over a short period of time - for example, a weekend or week-long period.

### → Part-time study options

You can complete your program with a reduced subject load each semester, creating space to pursue your academic dreams while chasing your professional or personal goals.

### → Flexible microcredentials

We offer a range of microcredentials that allow you to upskill in your chosen area. Designed to fit your schedule, microcredentials vary from self-paced, online delivery to in-person courses held on campus and facilitated by experienced course instructors.

## Amanda Tauber

POST-DOCTORAL RESEARCH FELLOW.  
PHD GRADUATE. NATIONAL FINALIST, FAMELAB  
SCIENCE COMMUNICATION COMPETITION.

"Being a small university, Bond's programs allow you to collaborate with fellow researchers, teaching academics and industry leaders offering a diverse range of expertise and skill sets. With smaller teams, students benefit from learning from peers and supervisors from across all stages of the research journey. The University's teaching focus provides PhD students with teaching experience alongside their studies, equipping them with skills for multifaceted careers in research and education."

*Learn more  
about Amanda*



## The value of being a Bondy



### Be one of Australia's most entrepreneurial graduates

Bond is a breeding ground for innovators and visionaries, according to a ranking of Australia's most entrepreneurial universities. A study by the University of New South Wales placed Bond second in the nation in the report *Australia's Most Entrepreneurial Universities 2023*, based on data on the number of funded founders and funded alumni. Bond's entrepreneurial spirit extends into its Transformer entrepreneurship program, providing fee-free coaching, support and professional development opportunities to students.



### Build a global network

The Bond University network is one you will benefit from for life. Bondies are afforded many opportunities to build connections with industry professionals, students, alumni and academics across a diverse range of backgrounds. Dynamic discussion-based lectures and tutorials foster a collaborative environment that emulates the professional world, creating international networking opportunities from your very first day.

#### Industry links include:

- Accor
- ADCO Constructions
- AECOM
- Amnesty International
- ANZ Banking Group
- Architectus Conrad Gargett
- Ashurst
- Australian Stock Exchange
- Australian Academy of Cinema and Television Arts (AACTA)
- Australian Broadcasting Corporation (ABC)
- Australian Film Institute (AFI)
- Australian Football League
- Australian Government Defence
- Australian Government Department of Foreign Affairs and Trade
- Australian Government Department of Home Affairs
- Australian Institute of Architects (AIA)
- Australian Institute of Building Surveyors (AIBS)
- Australian Institute of International Affairs (AIIA)
- Australian Institute of Project Management (AIPM)
- Australian Institute of Quantity Surveyors (AIQS)
- Australian Institute of Sport
- Australian New Zealand Communication Association (ANZCA)
- Australian Olympic Committee
- Australian Property Institute (API)
- Australian Psychological Society (APS)
- Australian Rugby Union
- Australian Teachers of Media (ATOM)
- Big Voice Media Group
- Board of Architects of Queensland (BOAQ)
- buildingSMART Australasia
- Channel 10 Australia
- Channel 7 Australia
- Chartered Institute of Building (CIOB)
- City of Gold Coast
- Gold Coast Hospital & Health Service
- Gold Coast University Hospital
- HealthCert
- InterContinental Hotel Group
- Jaggi Entertainment
- John Flynn Private Hospital
- Jones Lang LaSalle
- KPMG
- Lendlease
- Macquarie Group
- Marriott
- Mercer
- NEP Group
- Netball Queensland
- NewsCorp Australia
- Pathology Queensland
- Pindara Private Hospital
- Planning Institute of Australia (PIA)
- Populous
- Project Management Institute Global Accreditation Centre (PMI-GAC)
- Communications & Public Relations Australia (formerly PRIA)
- PwC
- Quantum
- Queensland Building and Construction Commission (QBCC)
- Queensland Health
- Ramsay Health Care
- Royal Institution of Chartered Surveyors (RICS)
- Screen Queensland
- Southport Private Hospital
- Study Gold Coast
- Suncorp Group
- Sunland Group
- The Abedian Foundation
- The Decisive Point
- Tweed Valley Hospital
- Turner & Townsend
- Valuers Registration Board of Queensland (VRBQ)
- Virgin
- World Surf League
- WT Partnership





## Grown-up startup

**Maryann Thexton was late to the biotech scene but drawing from her horseracing background, she's a stayer**

Ms Thexton's journey to startup CEO didn't follow a standard path. She spent 20 years in the racing industry as a horse trainer, but a chance connection forged with the scientist who would later become one of her co-founders and the company's Chief Scientific Officer, Hub Regtop, set her on the road to a new career.

Ms Thexton says studying an MBA at Bond was one of the keys to the company's success.

"Every subject that I could apply to that idea, I did. In managerial accounting and budgeting, I built out the financial structures; in the marketing and strategy subjects I documented how I was going to take this business and turn it into reality.

I kept all of those papers that I submitted as my assignments, and I've put them into a bound book and I've shared with our team so they could see where the ideas came from, what we were planning to do and then how it's pivoted. I already had a good direction of how we could take an idea and get it to market and become commercial so I very much used it as a road-map to step out and actually do it," she says.

The synbiotics produced by the Marl Group's company Bio-az can now be found in 19 different products either on retail shelves or on their way to market.

Read Maryann's full story at  
[alumni.bond.edu.au/arch33](https://alumni.bond.edu.au/arch33)



# Choose your postgraduate path

## Graduate certificate

A graduate certificate can be completed in just one semester full time - four months at Bond. It is a postgraduate credential usually focused on a specific area of study. It typically includes four subjects.

## Graduate diploma

A graduate diploma usually includes eight subjects and can be completed in two semesters - or eight months - full time at Bond.

## Master's degree

A master's degree is a high-level qualification that can be completed in one to two years full time at Bond. Master's degree graduates demonstrate a strong understanding in a particular area of study. Many master's programs at Bond are accredited with professional organisations.

## Research degree

Higher degree research programs suit students who want to pursue further research in a specific area. Bond offers a range of higher degree research programs including research master's programs and PhD study.

## Microcredential

Microcredentials are professional development short courses designed with industry to provide rapid upskilling in high-demand areas. For flexibility and accessibility, they are often online and self-paced or may include instructor-led workshops and coaching sessions. Microcredential achievement is recognised with a digital certificate and, in some cases, academic credit towards a postgraduate degree.

**Note:** For graduate certificate, graduate diploma and master's programs, each subject requires, on average, one two-hour lecture and one two-hour tutorial per week. Students should allow approximately six hours per subject per week for at-home preparation, additional reading and assignments - but this will vary from subject to subject.

## I want to study and I have\*...

### Extensive professional work experience



You may be eligible to use your significant work experience to gain entry into some postgraduate programs, including a graduate certificate, graduate diploma or master's degree.

### A bachelor's degree



Enhance your existing qualifications, take the next step in your career or change direction with a graduate certificate, graduate diploma or master's degree.

### A master's degree



Make an impact with further study that will set you apart from the rest with a Doctor of Philosophy (PhD) or a second master's degree to upskill and be recognised as an expert in a new area.

\* For full program and entry requirements visit [bond.edu.au/program](https://bond.edu.au/program)

## Choose your study area

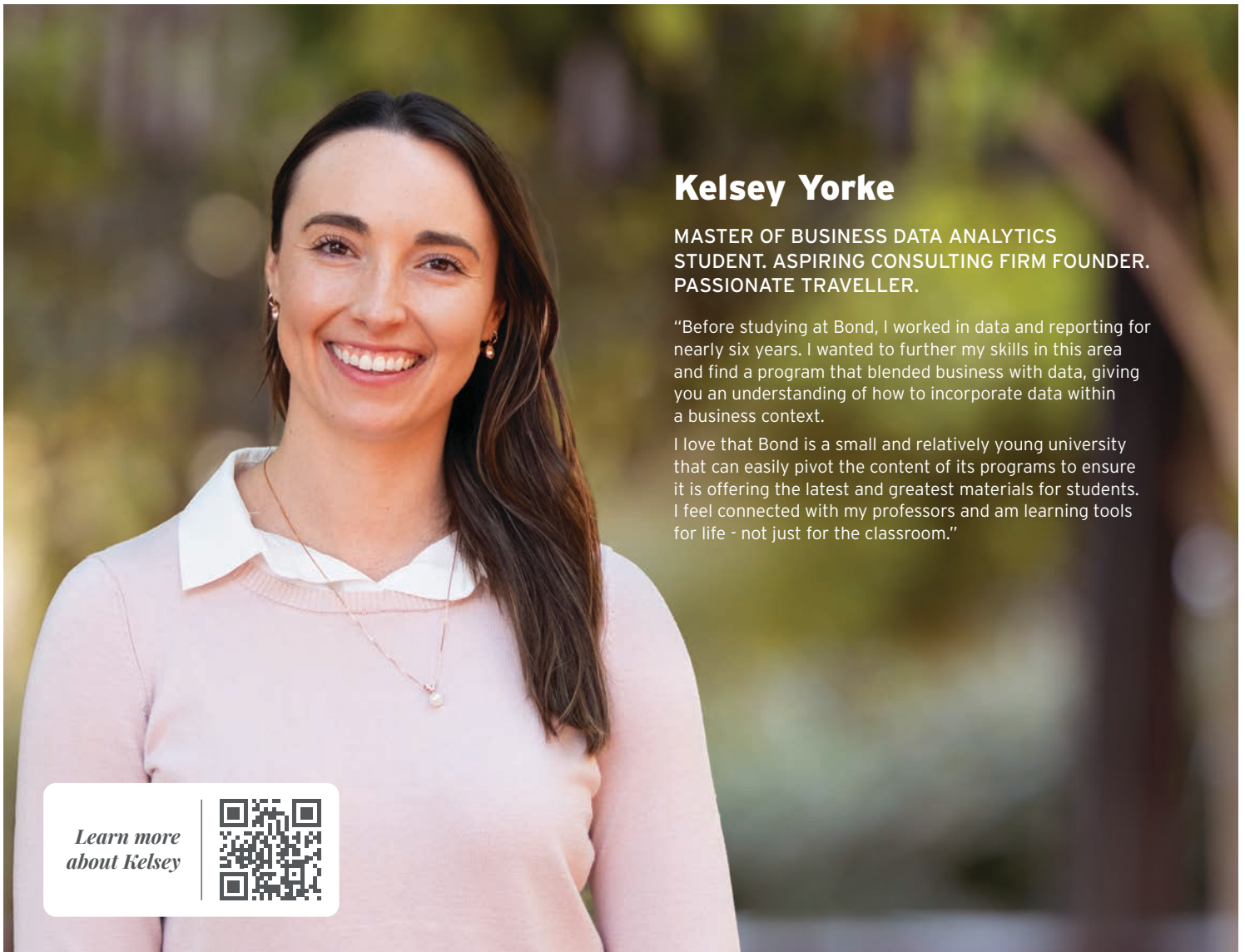
Deciding what to study next is a big decision and one that usually involves careful consideration. In this guide you will get a glimpse into all of the possibilities postgraduate study at Bond can offer. Explore the postgraduate programs we have to offer, or visit our website to dive deeper into the details.

	<b>Actuarial Science and Data Analytics</b>	12
	<b>Architecture</b>	13
	<b>Business, Commerce and Entrepreneurship</b>	14
	<b>Communication and Creative Media</b>	15
	<b>Construction, Property and Planning</b>	16
	<b>Health, Biomedical and Sport Sciences</b>	18
	<b>International Relations, Politics and Arts</b>	21
	<b>Law</b>	22
	<b>Project Management and Innovation</b>	23
	<b>Psychology, Criminology and Social Sciences</b>	25

## → Actuarial Science and Data Analytics

Bond is the only Queensland university to offer actuarial science programs accredited by the Actuaries Institute. Be mentored by Australia's leading economists and statisticians, access the latest industry technologies, develop specialised skills and earn an internationally recognised certification during your degree.

Program	Starting	Duration	Fees per semester	CRICOS course code
Master of Actuarial Practice	Jan, Sep	6 semesters (2 years)	\$16,503	108630F
Master of Actuarial Science	Jan, May, Sep	4 semesters (1 year 4 months)	\$16,455	108628M
Master of Actuarial Science (Specialisation)	Jan, May, Sep	6 semesters (2 years)	\$16,478	108629K
Master of Business Data Analytics	Jan, Sep	4 semesters (1 year 4 months)	\$16,505	098313F
Graduate Certificate in Data Analytics	May, Sep	1 semester (4 months)	\$22,310 total program fee	0100103



### Kelsey Yorke

MASTER OF BUSINESS DATA ANALYTICS STUDENT. ASPIRING CONSULTING FIRM FOUNDER. PASSIONATE TRAVELLER.

"Before studying at Bond, I worked in data and reporting for nearly six years. I wanted to further my skills in this area and find a program that blended business with data, giving you an understanding of how to incorporate data within a business context.

I love that Bond is a small and relatively young university that can easily pivot the content of its programs to ensure it is offering the latest and greatest materials for students. I feel connected with my professors and am learning tools for life - not just for the classroom."

*Learn more about Kelsey*



## → Architecture

Delivered in the award-winning Abedian School of Architecture building, Bond's architecture programs offer the fastest pathway to a career as a registered architect. Be mentored by internationally recognised practising architects and elevate your skills through innovative, creative and hands-on projects, workshops and research initiatives. You'll also enjoy your own dedicated studio space throughout your program, and have access to our state-of-the-art fabrication and robotics laboratories.

Program	Starting	Duration	Fees per semester	CRICOS course code
Graduate Diploma in Architecture	Jan, May	2 semesters (8 months)	\$21,310 ^	0101412
Master of Architecture	Jan, Sep	4 semesters (1 year 4 months)	\$22,131^	078184J

### Professor Paul Loh

INTERNATIONALLY RECOGNISED ARCHITECT. RESEARCHER AND INNOVATOR. HEAD OF THE ABEDIAN SCHOOL OF ARCHITECTURE.

"Our open-plan studio-based culture emulates a real-world contemporary architecture office environment where students are encouraged to collaborate, experiment, test and prototype ideas, integrating technical skills with critical thinking and disciplinary knowledge. The ethos of learning through making is core to our teaching. In this setting, we educate and nurture the future generation of architects, designers and practitioners who will lead and shape our profession and impact our built environment."



Fees per semester are based on an average calculation of 2024 domestic fees for Australian students and may differ depending on the subjects and majors you take in each semester. For more information on current fees, visit [bond.edu.au/fees](https://bond.edu.au/fees). Fees are not inclusive of additional costs such as the Student Services and Amenities Fee, accommodation, textbooks, living costs and program-specific costs.

For more information about entry requirements, visit [bond.edu.au/programs](https://bond.edu.au/programs).

^ Additional costs may apply.

## → Business, Commerce and Entrepreneurship

With the support of a strong alumni network, personal mentorship from world-class professionals, and a breadth of industry partnerships, Bond business, commerce and entrepreneurship graduates have forged successful careers across the globe. The top job title among Bond business graduates is director, closely followed by managing director, manager, owner and CEO.

Program	Starting	Duration	Fees per semester	CRICOS course code
Master of Accounting	Jan, May, Sep	4 semesters (1 year 4 months)	\$16,230	063115A
Master of Business	Jan, May, Sep	4 semesters (1 year 4 months)	\$16,488	063119G
Graduate Certificate in Business	Jan, May, Sep	1 semester (4 months)	\$22,380 total program fee	063164C
Master of Business Administration (MBA)	Jan, Sep	4 semesters (1 year 4 months)	\$16,713	108627A
Graduate Diploma in Business Administration	Jan, May, Sep	2 semesters (8 months)	\$22,310	0100508
Graduate Certificate in Business Administration	Jan, May, Sep	1 semester (4 months)	\$22,310 total program fee	078187F
Master of Business Administration / Master of Project Management	Jan, May, Sep	6 semesters (2 years)	\$15,364	085563F
Master of Sport Management	Jan, May, Sep	4 semesters (1 year 4 months)	\$16,528	096559M
Master of Sport Management / Master of Project Management	Jan, May, Sep	6 semesters (2 years)	\$15,216	097032A
Graduate Diploma in Sport Management	Jan, May, Sep	2 semesters (8 months)	\$22,235	096561F
Graduate Certificate in Sport Management	Jan, May, Sep	1 semester (4 months)	\$22,240 total program fee	096560G
Master of Finance	Jan, May, Sep	4 semesters (1 year 4 months)	\$16,230	063125K
Master of Finance / Master of Business Administration	Jan, May, Sep	6 semesters (2 years)	\$16,405	085653D
Master of Marketing	Jan, Sep	4 semesters (1 year 4 months)	\$16,450	113566M
Master of Management	Jan, May, Sep	4 semesters (1 year 4 months)	\$16,488	108626B
Master of International Hotel and Tourism Management	Jan, May, Sept	4 semesters (1 year 4 months)	\$16,488	102620A

Fees per semester are indicative based on an average calculation of 2024 domestic fees for Australian students only (excludes 2024 international fees) and may differ depending on the subjects and majors you take in each semester. 2025 fees will be available on Bond's website when confirmed. For more information on current fees and to view international fees, visit [bond.edu.au/fees](https://bond.edu.au/fees). Fees are not inclusive of additional costs such as the Student Services and Amenities Fee, accommodation, textbooks and living costs.

For more information about entry requirements, visit [bond.edu.au/program](https://bond.edu.au/program)

## → Communication and Creative Media

Bond's communication and creative media programs allow you to unlock your creative potential and tailor your degree to your unique goals. Learning from accomplished industry professionals, you will gain a diverse range of skills to further your career and access state-of-the-art facilities that provide a platform for you to create, explore and grow.

Program	Starting	Duration	Fees per semester	CRICOS course code
Master of Communication	Jan, May, Sep	3 semesters (1 year)	\$17,180	078660G
Master of Communication / Master of Project Management	Jan, May, Sep	6 semesters (2 years)	\$13,710	088315J



### Dr Libby Sander

MBA PROGRAM DIRECTOR.

"Bond's MBA is all about you. Our program is designed to be flexible and customisable to suit your background, your knowledge and your aspirations. Our student experience is second to none and our small classes help you build a world class network of professional connections. You can achieve anything here; some of our graduates have climbed the highest corporate ladders, others have used our entrepreneurial focus to build their own dream jobs."

*Listen to Libby's podcast The Floorplan*



## → Construction, Property and Planning

The construction industry is one of the largest economic sectors in Australia and one of the fastest growing globally. Bond's professionally accredited construction, property development and valuation programs prepare graduates to be at the forefront of driving growth and innovation in these industries. Use the latest tools and technologies throughout your studies, and gain the skills, connections and qualifications to stand out in the workforce.

Program	Starting	Duration	Fees per semester	CRICOS course code
<b>Graduate Certificate in Building Information Modelling and Integrated Project Delivery</b>	Jan	1 semester (4 months)	\$22,240 total program fee	099721D
<b>Graduate Certificate in Building Surveying</b>	Jan, May, Sep	2 semesters (8 months)*	\$22,240 total program fee	N/A
<b>Graduate Certificate in Construction Practice</b>	Jan, May, Sep	1 semester (4 months)	\$22,380 total program fee	093262G
<b>Graduate Certificate in Environmental Consulting</b>	May	2 semesters (8 months)*	\$22,310 total program fee	N/A
<b>Graduate Certificate of Valuation and Property Development</b>	Jan, May, Sep	1 semester (4 months)	\$22,240 total program fee	085558C
<b>Graduate Diploma in Building Information Modelling and Integrated Project Delivery</b>	Jan	2 semesters (8 months)	\$22,240	099720E
<b>Graduate Diploma in Building Surveying</b>	Jan, May, Sep	3 semesters (1 year)*	\$44,550 total program fee	N/A
<b>Graduate Diploma in Construction Practice</b>	Jan, May, Sep	2 semesters (8 months)	\$22,310	093263G
<b>Graduate Diploma of Valuation and Property Development</b>	Jan, May, Sep	2 semesters (8 months)	\$22,310	085560J
<b>Master of Building Information Modelling and Integrated Project Delivery</b>	Jan	3 semesters (1 year)	\$16,680	099719J
<b>Master of Building Surveying</b>	Jan, May, Sep	4 semesters (1 year 4 months)	\$16,768	071287C
<b>Master of Construction Practice</b>	Jan, May, Sep	4 semesters (1 year 4 months)	\$16,715	071288B
<b>Master of Construction Practice / Master of Project Management</b>	Jan, May, Sep	6 semesters (2 years)	\$14,868	086028K
<b>Master of Valuation and Property Development</b>	Jan, May, Sep	4 semesters (1 year 4 months)	\$16,680	085561G
<b>Master of Valuation and Property Development / Master of Project Management</b>	Jan, May, Sep	6 semesters (2 years)	\$14,868	085564E

Fees per semester are indicative based on an average calculation of 2024 domestic fees for Australian students only (excludes 2024 international fees) and may differ depending on the subjects and majors you take in each semester. 2025 fees will be available on Bond's website when confirmed. For more information on current fees and to view international fees, visit [bond.edu.au/fees](https://bond.edu.au/fees). Fees are not inclusive of additional costs such as the Student Services and Amenities Fee, accommodation, textbooks, living costs and program-specific costs.

\* Available for part-time study only.

For more information about entry requirements, visit [bond.edu.au/program](https://bond.edu.au/program)





## Daryl McPhee

ASSOCIATE PROFESSOR. LEADING MARINE ECOLOGY RESEARCHER AND AUTHOR. AVID FISHERMAN.

"I have been lucky enough to undertake environmental consulting projects throughout much of Australia and internationally. As an educator, bringing actual practical experience to the classroom is key to making it meaningful for students.

I love engaging with students to build their knowledge and understanding so they can become leaders in the critical and growing field of environmental consulting which services the government, the private sector and non-government environmental organisations."

*Learn more  
about Daryl*



## → Health, Biomedical and Sport Sciences

Bond has earned a reputation for the excellence of its education and research in medical, health and sports sciences. Learning under the guidance of industry experts and internationally published academics, you will be personally supported and challenged as you pursue postgraduate studies in your chosen field.

Program	Starting	Duration	Fees per semester	CRICOS course code
<b>Medical Program<sup>^</sup></b>				
<b>Bachelor of Medical Studies (BMedSt)</b>	May, Sep	8 semesters (2 years 8 months)	\$31,370	0101292
<b>Doctor of Medicine (MD)</b>		6 semesters (2 years)	\$31,370	111520H
		TOTAL 14 semesters (4 years 8 months)		
<b>Master of Healthcare Innovations</b>	Jan, May, Sep	3 semesters (1 year)	\$16,163	099578F
<b>Graduate Certificate in Health Systems</b>	Jan	Maximum of 4 semesters (1 year 4 months) <sup>***</sup>	\$17,720 total program fee	N/A
<b>Graduate Certificate in Evidence Based Practice</b>	Jan	Maximum of 4 semesters (1 year 4 months) <sup>***</sup>	\$17,720 total program fee	N/A
<b>Master of Nutrition and Dietetic Practice</b>	May	6 semesters (2 years)	\$17,600	105326E
<b>Graduate Diploma in Nutrition</b>	May	2 semesters (8 months)	\$17,600	079258K
<b>Graduate Certificate in Nutrition</b>	May	1 semester (4 months)	\$17,600 total program fee	079257M
<b>Master of Occupational Therapy</b>	May, Sep	6 semesters (2 years)	\$22,240	106625H
<b>Graduate Diploma in Occupation and Health</b>	May, Sep	2 semesters (8 months)	\$22,240	106624J
<b>Professional Doctorate of Occupational Therapy</b>	May, Sep	12 semesters (4 years)	Variable <sup>**</sup>	111161D
<b>Doctor of Philosophy</b>	Jan, May, Sep	Maximum of 4 years	Variable <sup>**</sup>	063150J
<b>Doctor of Physiotherapy</b>	May	6 semesters (2 years)	\$23,960	111801K
<b>Master of Science by Research (Health Sciences)</b>	Jan, May, Sep	Maximum of 2 years	Variable <sup>**</sup>	073729K

<sup>^</sup> The Medical Program comprises two sequential degrees - the Bachelor of Medical Studies (BMedSt) and the Doctor of Medicine (MD). All students selected for entry into the Medical Program will have to complete both the BMedSt and MD to be eligible for registration as a medical practitioner in any state or territory in Australia or New Zealand.

Fees per semester are indicative based on an average calculation of 2024 domestic fees for Australian students only (excludes 2024 international fees) and may differ depending on the subjects and majors you take in each semester. 2025 fees will be available on Bond's website when confirmed. For more information on current fees and to view international fees, visit [bond.edu.au/fees](https://bond.edu.au/fees). Fees are not inclusive of additional costs such as the Student Services and Amenities Fee, accommodation, textbooks and living costs.

<sup>\*\*</sup> Fees vary due to differences in individual study schedules. Contact [hdr@bond.edu.au](mailto:hdr@bond.edu.au) to learn more.

<sup>\*\*\*</sup> Available for part-time study only.

## Hannah Grominsky

OCCUPATIONAL THERAPY STUDENT.  
SOCCER PLAYER. ASPIRING PAEDIATRIC OT.

"I chose to study OT because, in my opinion, it is healthcare delivered in a holistic manner, and is meaningful and impactful work.

I chose to study at Bond because of the opportunity for individualised learning, as well as the exceptional learning environments at the Bond Institute of Health and Sport, including the Work Play Lab and Activities of Daily Living Lab."



*Learn more  
about Hannah*





## **Associate Professor Greg Cox**

**CO-HEAD OF PROGRAM. NUTRITION LEAD FOR THE 2016 AUSTRALIAN OLYMPIC TEAM.**

“Bond’s Master of Nutrition and Dietetic Practice has incredible student support and mentoring, a unique approach to teaching, a great range of placements to develop and test your skills, and intensive opportunities to learn about speciality areas in nutrition. The program has so much to offer, with exceptional facilities for our students to practise their skills in. My favourite part of teaching nutrition and dietetic practice is the labs - I teach sports nutrition and we do physiology laboratory activities as well as use our new teaching kitchen, helping students to understand the interaction between exercise and nutrition.”

## → International Relations, Politics and Arts

Informed by research, flexible in their structure and practical in their application, Bond offers a number of degrees in international relations, politics and arts. Learn from academics who are global leaders in their field, and graduate with the knowledge and skills to navigate the complexities of today's interconnected world with confidence, no matter what your chosen career and industry.

Program	Starting	Duration	Fees per semester	CRICOS course code
Graduate Certificate in International Relations	Jan, May, Sep	1 semester (4 months)	\$17,500 total program fee	107662F
Graduate Certificate in International Relations (Online)	Jan, May, Sep	1 semester (4 months)	\$17,500 total program fee	N/A
Master of Arts (Coursework)	Jan, May, Sep	3 semesters (1 year)	\$16,630	078662F
Master of International Relations	Jan, May, Sep	3 semesters (1 year)	\$15,587	078661G
Master of International Relations / Master of Project Management	Jan, May, Sep	6 semesters (2 years)	\$13,698	088317G
Master of Philosophy	Jan, May, Sep	2 years	Variable**	072092F
Doctor of Philosophy	Jan, May, Sep	Maximum of 4 years	Variable**	063150J



### Tony Yang

INTERNATIONAL RELATIONS ALUMNUS. SPORTS DIPLOMACY PHD CANDIDATE. TEACHING FELLOW.

"After completing my undergraduate degree at Bond, I worked in the sports industry for six years across four continents. Fortunately, one of my undergraduate lecturers' Dr Damian Cox introduced me to Dr Stuart Murray, a sports diplomacy expert and academic at Bond, which was the trigger for me to decide to return to the university and study a Master of International Relations. I am now completing my PhD in Sports Diplomacy and subsequently lecturing and tutoring international relations subjects.

Every international relations student in my class has been unique, and no two students share the same attitudes to the broad, complex and rapidly changing political landscape around the world. It is really an honour to learn from each student while delivering academic content.

The international relations field is more than a university degree, but more a pathway to embrace your mind with a globalised vision and perspectives, which are becoming a crucial skill set for employees working in diverse disciplines."

Fees per semester are indicative based on an average calculation of 2024 domestic fees for Australian students only (excludes 2024 international fees) and may differ depending on the subjects and majors you take in each semester. 2025 fees will be available on Bond's website when confirmed. For more information on current fees and to view international fees, visit [bond.edu.au/fees](https://bond.edu.au/fees). Fees are not inclusive of additional costs such as the Student Services and Amenities Fee, accommodation, textbooks, living costs and program-specific costs.

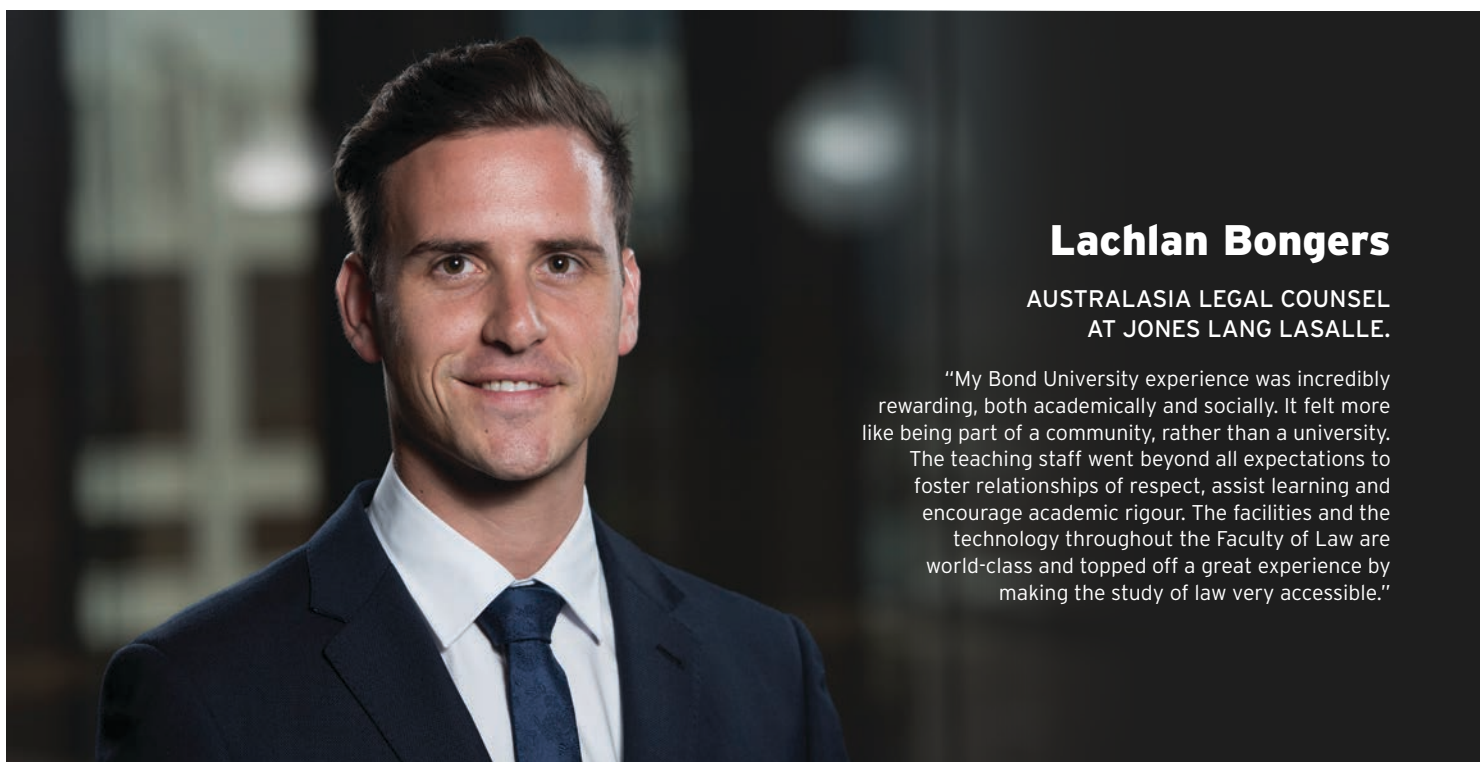
\*\* Fees may vary due to differences in individual study schedules. Contact [hdr@bond.edu.au](mailto:hdr@bond.edu.au) to learn more.

For more information about entry requirements, visit [bond.edu.au/program](https://bond.edu.au/program)

## → Law

The Faculty of Law is one of Australia's most highly regarded law schools. Delivered by experienced, world-class legal practitioners in state-of-the-art teaching facilities, our range of innovative postgraduate law programs are designed for those who wish to switch to a career in law, or specialise in a particular field.

Program	Starting	Duration	Fees per semester	CRICOS course code
<b>Juris Doctor</b>	Jan, May, Sep	6 semesters (2 years)	\$21,815	093923J
<b>Master of Laws</b>	Jan, May, Sep	2 semesters (8 months)	\$22,240	084235G
<b>Master of Laws (by Research)</b>	Jan, May, Sep	6 semesters (2 years)	Variable**	063455C
<b>Master of Laws in Enterprise Governance</b>	Sep	4 semesters (1 year 4 months)***	\$11,120	N/A
<b>Master of Laws in Family Dispute Resolution</b>	Jan	4 semesters (1 year 4 months)***	\$11,120	N/A
<b>Master of Legal Administration</b>	Jan, May, Sep	3 semesters (1 year)	\$22,133	084236G
<b>Graduate Diploma in Legal Practice (Online)</b>	Jan, May, Sep	2 semesters (8 months)	\$10,960	N/A
<b>Graduate Certificate in Family Dispute Resolution</b>	Jan	2 semesters (8 months)	\$11,120	N/A
<b>Doctor of Legal Science (Research)</b>	Jan, May, Sep	4 years	Variable**	093848D
<b>Doctor of Philosophy</b>	Jan, May, Sep	Maximum of 4 years	Variable**	063150J



### Lachlan Bongers

AUSTRALASIA LEGAL COUNSEL  
AT JONES LANG LASALLE.

“My Bond University experience was incredibly rewarding, both academically and socially. It felt more like being part of a community, rather than a university. The teaching staff went beyond all expectations to foster relationships of respect, assist learning and encourage academic rigour. The facilities and the technology throughout the Faculty of Law are world-class and topped off a great experience by making the study of law very accessible.”

Fees per semester are indicative based on an average calculation of 2024 domestic fees for Australian students only (excludes 2024 international fees) and may differ depending on the subjects and majors you take in each semester. 2025 fees will be available on Bond's website when confirmed. For more information on current fees and to view international fees, visit [bond.edu.au/fees](https://bond.edu.au/fees). Fees are not inclusive of additional costs such as the Student Services and Amenities Fee, accommodation, textbooks and living costs.

\*\* Fees may vary due to differences in individual study schedules. Contact [hdr@bond.edu.au](mailto:hdr@bond.edu.au) to learn more.

\*\*\*Available for part-time study only.

For more information about entry requirements, visit [bond.edu.au/program](https://bond.edu.au/program)

## → Project Management and Innovation

The world of project management is changing. Projects and programs are increasingly creative in nature, innovative thinking is essential, and disruption and change management are the norm. Bond's postgraduate project management and innovation programs are designed to ensure you are equipped to take advantage of an abundance of opportunities.

Program	Starting	Duration	Fees per semester	CRICOS course code
Graduate Certificate in Project Management	Jan, May, Sep	3 semesters (1 year)*	\$22,520 total program fee	N/A
Graduate Diploma in Project Management	Jan, May, Sep	2 semesters (8 months)	\$22,520	N/A
Master of Project Innovation	Jan, May, Sep	4 semesters (1 year 4 months)	\$13,924	0100041
Master of Project Management	Jan, May, Sep	4 semesters (1 year 4 months)	\$14,014	078813G
Master of Project Innovation / Master of Project Management	Jan, May, Sep	6 semesters (2 years)	\$14,913	099216K

### Project Management combined degrees

There are also a number of combined degree options available within the Master of Project Management, across various complementary study areas. A degree in project management is capable of unlocking wider career opportunities, both now and well into the future.

Learn more about our combined degrees at [bond.edu.au/program](https://bond.edu.au/program)



### Greg Skulmoski

ASSOCIATE PROFESSOR. PROJECT INNOVATION AND MANAGEMENT EXPERT. GAMIFICATION LEADER.

“When exposed to Bond’s flexible learning style, our project management students become more engaged, produce higher quality work, and learn to a higher standard. For their projects of choice, we have seen an array of interesting initiatives, such as developing tiny homes, setting up a taco truck, transporting an elephant between zoos, planning a wedding in the Canadian Rockies, and renovating an apartment building. I love seeing the enthusiasm that our students bring to their assignments.”

Fees per semester are indicative based on an average calculation of 2024 domestic fees for Australian students only (excludes 2024 international fees) and may differ depending on the subjects and majors you take in each semester. 2025 fees will be available on Bond's website when confirmed. For more information on current fees and to view international fees, visit [bond.edu.au/fees](https://bond.edu.au/fees). Fees are not inclusive of additional costs such as the Student Services and Amenities Fee, accommodation, textbooks, living costs and program-specific costs.

\*\* Fees may vary due to differences in individual study schedules. Contact [hdr@bond.edu.au](mailto:hdr@bond.edu.au) to learn more.

For more information about entry requirements, visit [bond.edu.au/program](https://bond.edu.au/program)

\* Available for part-time study only.



## Renuka Waghmare

MASTER OF PROJECT MANAGEMENT  
(PROFESSIONAL) STUDENT. ARCHITECT.  
ASPIRING PROJECT MANAGER.

"My studies at Bond have equipped me with a robust foundation in project management principles, complementing my architectural background. I've developed the knowledge and skills required to excel in my field.

My time at Bond has been incredibly rewarding, allowing me to further develop my project management skills and expand my knowledge in areas such as shop fittings, joinery, and estimations. The personalised guidance from professors has not only helped me recognise my strengths but has also empowered me to enhance them. This unique blend of academic rigour and individualised support has profoundly prepared me for a successful career in project management."

*Learn more  
about Renuka*





## → Psychology, Criminology and Social Sciences

Bond's psychology, criminology and social sciences courses lead the way in innovative teaching methodologies and impactful research initiatives.

We offer postgraduate study options designed to help you achieve your career goals and make meaningful societal change. With small class sizes and a practical, hands-on approach, you'll have personal support every step of the way.

Program	Starting	Duration	Fees per semester	CRICOS course code
Graduate Certificate in Criminology	Jan, May, Sep	1 semester (4 months)	\$14,510 total program fee	083525F
Graduate Diploma of Psychological Science	Jan, May, Sep	2 semesters (8 months)	\$18,935	063195G
Graduate Diploma in Psychology (Bridging) (Cognate)	Jan	3 semesters (1 year)	\$44,900 total program fee	N/A
Graduate Diploma in Psychology (Bridging) (Non-Cognate)	May	3 semesters (1 year)	\$44,900 total program fee	N/A
Master of Criminology	Jan, May, Sep	3 semesters (1 year)	\$16,960	078659A
Master of Criminology / Master of Project Management	Jan, May, Sep	6 semesters (2 years)	\$13,637	088316G
Master of Professional Psychology	May	2 semesters (8 months)	\$46,080 total program fee	096695C
Master of Psychology (Clinical)	May	6 semesters (2 years)	\$14,833	063429E

### Dr Peta Stapleton

EMOTIONAL FREEDOM TECHNIQUES EXPERT.  
2019 AUSTRALIAN PSYCHOLOGIST OF THE YEAR. ASSOCIATE PROFESSOR.

"We tend to only properly celebrate the bigger, impressive, outstanding achievements in our lives. But if you think about it, most of our lives are spent between these large milestones. Make sure to celebrate the journey along the way, and the smaller wins too."

Fees per semester are indicative based on an average calculation of 2024 domestic fees for Australian students only (excludes 2024 international fees) and may differ depending on the subjects and majors you take in each semester. 2025 fees will be available on Bond's website when confirmed. For more information on current fees and to view international fees, visit [bond.edu.au/fees](https://bond.edu.au/fees). Fees are not inclusive of additional costs such as the Student Services and Amenities Fee, accommodation, textbooks, living costs and program-specific costs.

For more information about entry requirements, visit [bond.edu.au/program](https://bond.edu.au/program)

# Higher Degrees by Research

At Bond, we offer postgraduate research degrees at master's and doctoral levels in all faculties, including the Master by Research, Master of Philosophy (MPhil), Doctor of Legal Science (SJD), Professional Doctorate of Occupational Therapy (OTD) and Doctor of Philosophy (PhD).

As a university, we foster innovative and entrepreneurial research that contributes to new ideas in regional, national and global contexts. Our partnerships with private enterprise, industry organisations, government agencies and international universities give candidates opportunities to learn and work with world-leading ideas and people across a range of knowledge economy disciplines.

As a Bond research candidate, you will be part of a high-quality research environment and will benefit from our strong focus on postgraduate research studies. The Bond experience offers a number of benefits, including:

- Access to external and University scholarships
- Our team supervision approach, which provides students with access to a broad range of research skills and expertise
- Access to a wide array of subjects
- Foundational research training, including the theory of knowledge, research methodology, ethics and research communication
- An 'innovation induction' and professional development programs to enhance the educational experiences of postgraduate research students
- Comprehensive research support including publications and ethics

The Research Training Program provides fee-free postgraduate research degree places to eligible Australian and New Zealand citizens and Australian permanent residents. Each Faculty offers specialty expertise and independent research capabilities in a range of disciplines - explore our research areas below.



**Postgraduate research:**

[bond.edu.au/research/  
research-degrees](https://bond.edu.au/research/research-degrees)

## Bond Business School

- Accounting
- Actuarial Science
- Business Ethics
- Change Management
- Computational Finance
- Consumer Behaviour
- Data Analytics
- Econometrics
- Economics
- Entrepreneurship
- Family Business
- Finance
- Forensic Accounting
- Health Analytics
- International Business
- International Strategy
- Leadership
- Management
- Optimisation
- Organisational Behaviour
- Sport Management
- Statistics
- Sustainability
- Tourism Management

## Faculty of Health Sciences & Medicine

- Allied Health
- Nutrition and Dietetics
- Occupational Therapy
- Physiotherapy
- Rehabilitation
- Sport and Exercise Science
- Biomedical and Clinical Sciences
- Medicine
- Evidence-Based Healthcare
- Public Health
- First Nations Health
- Health Professions Education

## Faculty of Law

- Business and Commercial Law
- Dispute Resolution
- Legal Education
- Law and Technology
- International and Comparative Law
- Cybersecurity and Space Law
- Environmental and Resources Law

## Faculty of Society & Design

- Architectural Design
- Architectural History and Theory
- Automation and Technology in Architecture and Construction
- Australian Studies
- Communication
- Construction Management and Quantity Surveying
- Construction Practice
- Criminology
- Environmental Management
- Film and Television, and Creative Media
- International Relations
- Media
- Philosophy
- Project Management
- Property Valuation
- Public Relations and Advertising
- Psychology and Cognitive Science
- Real Estate and Property
- Sustainable Development
- Sustainable Design
- Urban Design and Planning
- Virtual and Augmented Reality

## Kate Taylor

SCIENCE GRADUATE.  
AVID TRAVELLER. MBA STUDENT.

"I chose to study an MBA at Bond because I wanted to challenge myself and expand my managerial skills.

At Bond, the thing that stands out the most to me is the people. The connections I have made through the university are invaluable.

My mum and my sister both studied at Bond, and I wish I'd studied my undergraduate degree here too. If you want to get the most out of your university experience, I recommend coming to Bond."

*Learn more  
about Kate*



# Scholarships

Bond recognises and rewards future leaders through our scholarship program. Every year, we award part-fee scholarships and bursaries to postgraduate applicants who have demonstrated outstanding academic abilities, community involvement, sporting achievements and leadership skills.

## Bond University scholarships (non-research based)

Bond University funds a number of scholarships for students studying at a postgraduate level.

For information on all postgraduate scholarship opportunities, including application deadlines, eligibility criteria and scholarship conditions, please visit [bond.edu.au/scholarships](https://bond.edu.au/scholarships) or contact your Postgraduate Relationships Manager by visiting [bond.edu.au/contact](https://bond.edu.au/contact).

## Bond University Higher Degree Research scholarships

Higher Degree Research (HDR) scholarships aim to ensure students have sufficient resources whilst studying at Bond.

Scholarships are awarded to commencing doctoral degree research students through a competitive selection process, and provide financial support to HDR students for a specified period while they are studying. Learn more at [bond.edu.au/researchers/higher-degree/scholarships-support](https://bond.edu.au/researchers/higher-degree/scholarships-support).

## Research Training Program

These scholarships are funded by the Australian Government. Stipends and fee-waiver scholarships are available for domestic and international students seeking to undertake research-based postgraduate degrees. For further information, visit: [education.gov.au/research-training-program](https://education.gov.au/research-training-program) or [bond.edu.au/researchers/higher-degrees/scholarships-support](https://bond.edu.au/researchers/higher-degrees/scholarships-support).



# Financing your degree

An investment in your qualifications is an investment in your future. If you choose to complete postgraduate study at Bond, you can access a number of financing options to support your studies, from the Australian Government's interest-free FEE-HELP scheme, through to loyalty discounts and student funds.

## FEE-HELP

FEE-HELP is an interest-free student loan program funded by the Australian Government for all Australian citizens and others who meet the eligibility requirements.

As of 2024, students can borrow up to \$121,844 for any program except medicine, which has a limit of \$174,998. Repayments are made through the taxation system at a minimum rate of 1 per cent per annum when your annual income reaches \$51,440 (2023-24 financial year). The rate of repayment increases as annual income increases.

You can apply for FEE-HELP online using your Student Identification Number once you have received an offer from Bond University.

[studyassist.gov.au](http://studyassist.gov.au)

## Loyalty discounts

Bond offers a number of loyalty discounts to students who have a direct family member studying an eligible program at Bond, or who have already completed an eligible program here. These loyalty programs may provide a reduction of up to 10 per cent on tuition fees.

## Other government assistance

Most Australian students who receive some form of government income support are on either Youth Allowance, Austudy or ABSTUDY. Contact Centrelink for more information on eligibility.

## Student Opportunity Fund

As a Bond student, you will have access to a range of experiences and activities that will enhance your learning. The Student Opportunity Fund can help to finance those added extras with assistance available up to \$2,000. For more information, visit [bond.edu.au/student-opportunity-fund](http://bond.edu.au/student-opportunity-fund).

## Megan Stapleton

PSYCHOLOGY STUDENT. MUSICIAN.  
FUTURE PSYCHOLOGIST.

"At Bond I have had the opportunity to receive personalised feedback from professors and network with industry professionals, which has helped prepare me for future successes. I am working alongside my supervisors in conducting meaningful research on a topic of my choosing, allowing me to explore my interests and contribute to the advancement of knowledge in psychology."

*Learn more  
about Megan*



TAKE YOUR DEGREE FOR A

# TEST DRIVE

We'll help you make the best possible choice when considering further study at Bond - in just one hour!

Meet your academics

Find the perfect fit

Focus on student success

See what postgraduate life has to offer

Available at Gold Coast and Brisbane locations



Book an in-person or virtual test drive:

[bond.edu.au/test-drive](https://bond.edu.au/test-drive)



\* Our program offering in Brisbane is limited and does not encapsulate all study areas. For more information, visit [bond.edu.au/brisbane](https://bond.edu.au/brisbane)

# Your postgraduate journey starts now

1

## Take a test drive

Choosing to study is a big decision, so rest assured we are here to support you every step of the way. Take our postgraduate programs for a Postgraduate Test Drive before you apply. Contact us to arrange a personalised experience.

[bond.edu.au/testdrive](https://bond.edu.au/testdrive)

---

2

## Pick your program

Deciding on a postgraduate degree is a personal choice, but you're not alone - we're here to help. Browse our range of postgraduate programs online, and contact us if you have any questions.

---

3

## Start your application

Apply direct to Bond through our online application form. Applications for most Bond programs (excluding the Medical Program) can be lodged at any time directly to the University - you do not need to go through QTAC. Applications for the Medical Program are only open to domestic students and must be lodged through the Queensland Tertiary Admissions Centre (QTAC) at [qtac.edu.au](https://qtac.edu.au).

---

4

## Upload all required documents

Make sure you complete all required fields in your application form and upload any required documentation. You may be asked to submit documentation including:

- Academic transcripts
  - Photo identification
  - Professional references
  - Any other documents required for specific programs
- 

5

## Submit your application

Agree to the application declaration and click 'Submit'. You'll receive an email from Bond University to confirm your application was successfully submitted. The application review process will normally take two weeks, provided all your supporting documentation has been received.

---

6

## Receive your Letter of Offer

Keep an eye on your inbox. If your application is successful, you will receive an official offer for your postgraduate program via email.

---

7

## Accept your Letter of Offer

To accept your offer, log in to our online application service and follow the instructions to complete the FEE-HELP form online or pay the required fees as listed on your offer.

---

8

## Complete the Academic Skills for Postgraduate Success microcredential

Delivered online, this free microcredential aims to refresh your academic study skills to ensure you are confident studying discipline-specific content at a postgraduate level. The course will update your knowledge and introduce you to new tools, standards and practices. Enrol at [bond.edu.au/microcredential/academic-skills-for-postgraduate-success](https://bond.edu.au/microcredential/academic-skills-for-postgraduate-success)

---

9

## Attend Orientation

Orientation is the perfect time to start building your network, find your way around campus and complete your enrolment at Bond. The Orientation experience features an exciting program that includes dedicated postgraduate events. There are also lots of information sessions held on campus and online that will prepare you for study.

---

# A standout career starts here.

If you're ready to transform your career – and transform your life – Bond University is the place to start. Lay the foundation for a brilliant future at our Gold Coast campus or our innovative new Brisbane teaching location. Scan the code to get in touch with our dedicated Postgraduate Relationships Manager to discuss your study and career options, and receive support at every step along the way.



## Office of Future Students

Bond University  
Gold Coast Queensland 4229  
Australia  
Toll free: 1800 074 074  
Phone: 07 5595 2222  
[bond.edu.au/enquire](http://bond.edu.au/enquire)  
**[bond.edu.au](http://bond.edu.au)**



In the spirit of reconciliation, Bond University acknowledges the Kombumerri people, the traditional Owners and Custodians of the land on which the university now stands. We pay respect to Elders past, present and emerging.

## 2025 Postgraduate Guide For Australian Students

The information published in this document is correct at the time of printing (2024). However, all programs are subject to review by the Academic Senate of the University and the University reserves the right to change its program offerings and subjects without notice. The information published in this document is intended as a guide and persons considering an offer of enrolment should contact the relevant Faculty or Institute to see if any changes have been made before deciding to accept their offer.

CRICOS Provider Code 00017B  
TEQSA Provider Number PRV12072

